



# GMT MONTHLY MEMBERSHIP PROGRESS REPORT

Results as of: 12/31/2023

Multiple District 2

LOCATION: TEXAS

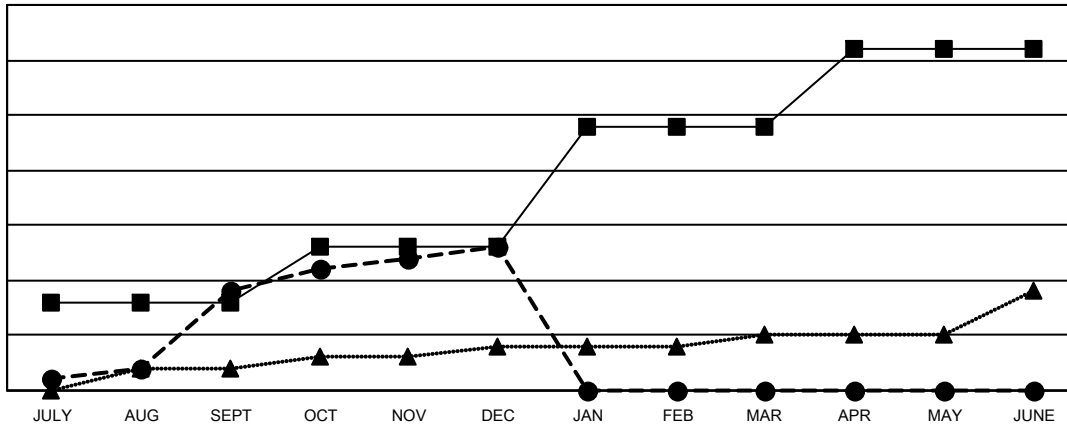
GMT: OPEN

GMT CA 1

Clubs			
RESULTS FOR 2023-2024			
QUARTER	NEW CLUB GOAL	NEW CLUBS	DROPPED CLUBS
JULY/AUG/SEPT	8	9	8
OCT/NOV/DEC	5	4	7
JAN/FEB/MAR	11	0	0
APR/MAY/JUNE	7	0	0

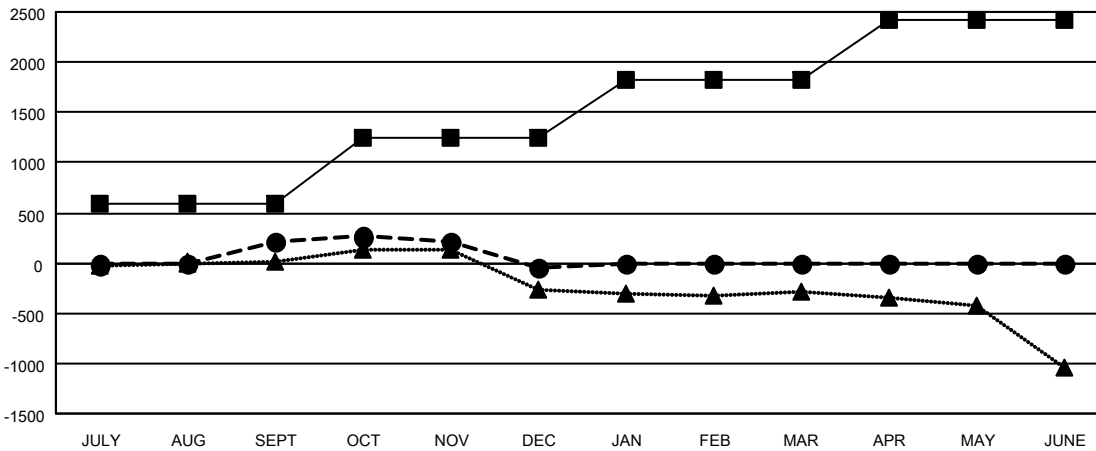
Members			
RESULTS FOR 2023-2024			
QUARTER	MEMBER GROWTH NET GOAL	MEMBER GROWTH ACTUAL	DROPPED MEMBERS ACTUAL (including transfers)
JULY/AUG/SEPT	591	1,149	818
OCT/NOV/DEC	661	741	938
JAN/FEB/MAR	572	0	0
APR/MAY/JUNE	592	0	0

GOALS AND ACTUAL NEW CLUBS CUMULATIVE



- - CURRENT YEAR GOALS FOR NEW CLUBS
- - CURRENT YEAR ACTUAL NEW CLUBS
- ▲ - LAST YEAR ACTUAL NEW CLUBS

GOALS AND ACTUAL MEMBERS CUMULATIVE



- - MEMBER GROWTH NET GOAL
- - MEMBER GROWTH ACTUAL
- ▲ - LAST YEAR MEMBERSHIP ACTUAL

DROPPED CLUBS: 15	387 CLUBS OF 765 ADDED 1 OR MORE NEW MEMBERS	<b>GENDER DISTRIBUTION</b>
		MALE 13,241 (60.83%)
		FEMALE 8,527 (39.17%)
<b>DROPPED MEMBERS</b>	<a href="#">CLICK HERE FOR CUMULATIVE MEMBERSHIP DATA</a>	TOTAL FAMILY UNIT MEMBERS 3,386
DECEASED 125		FAMILY MEMBERS PAYING HALF DUES 1,730
CLUB CANCELLED 49		
OTHER 1,580		
<b>TOTAL 1,754</b>		